

# Educational Horizons

MAY 2015

[www.pobschools.org](http://www.pobschools.org) PLAINVIEW-OLD BETHPAGE CENTRAL SCHOOL DISTRICT

## 2015-2016 PROPOSED BUDGET

### A MESSAGE FROM YOUR BOARD OF EDUCATION

#### Dear Residents:

With the adoption of the proposed 2015-2016 school district budget, we will continue the high-quality education that sets this District apart—and maintain our distinguished academic and extracurricular programs—all while operating well under the state mandated tax cap. Plainview-Old Bethpage's 2015-2016 tax levy is set at 0.22 percent, significantly below the allowable levy limit of 2.03 percent. The proposed budget will, among many other things, preserve academic opportunities, ensure equal educational opportunity for all our students, and put both middle schools on the same schedule. Our proposed budget will accomplish all this while maintaining current class sizes and expanding opportunities K through 12, including:



- ✓ One-to-one tablets for students in grades 5 and 6
- ✓ Middle schools on the same schedule
- ✓ Increased staffing for AIS at the elementary level
- ✓ Continued extra help for elementary students
- ✓ Extra help in elementary schools
- ✓ Wireless environment in every school
- ✓ Increased field trips for all schools and grade levels
- ✓ A music studio and technology lab for each middle school
- ✓ Z-Space, a virtual learning environment, in all secondary schools

The Board of Education's goal is to help prepare all students for college and careers in the 21st-century workplace. The programs and services that define the Plainview-Old Bethpage School District are instrumental in meeting this goal, and that is why we maintained them in this proposed budget. You can read full budget information in the pages that follow and on our website at [www.pobschools.org](http://www.pobschools.org). Also on the ballot are two Capital Reserve propositions that allow the district to maintain our facilities with no increase to the tax levy. We encourage you to inform yourself and, most important, to vote. The vote date is **Tuesday, May 19**. Mark your calendars!

Sincerely,

**The Plainview-Old Bethpage Board of Education**

**ANNUAL BUDGET VOTE: TUESDAY, MAY 19 • 6 A.M. TO 9 P.M.**



**Plainview-Old Bethpage Central School District**  
Administrative Offices • 106 Washington Avenue • Plainview, NY 11803  
[www.pobschools.org](http://www.pobschools.org)

#### Board of Education

Gary Bettan, *President*  
Emily Schulman, *Vice President*  
Debbie Bernstein • Seth Greenberg  
Ginger Lieberman • Amy Pierno • Evy Rothman

Dr. Lorna R. Lewis, *Superintendent of Schools*

\*\*\*\* ECRWSS \*\*\*\*  
POSTAL CUSTOMER  
Plainview-Old Bethpage  
Central School District

Non-Profit  
Organization  
U.S. Postage  
**PAID**  
Hicksville, N.Y.  
Permit 156

# PROPOSITION I: ANNUAL SCHOOL DISTRICT BUDGET

## REVENUE

	<u>Approved 2014-2015</u>	<u>Proposed 2015-2016</u>	<u>Change</u>
State Aid	\$15,255,144	\$16,349,956	\$1,094,812
Other Revenue	\$7,744,933	\$7,775,136	\$30,203
Tax Levy	\$121,638,961	\$121,910,510	\$271,549
<b>Budget</b>	<b>\$144,639,038</b>	<b>\$146,035,602</b>	<b>\$1,396,564</b>

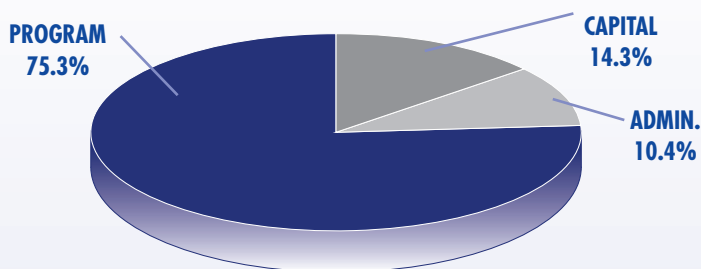
The tax levy increase is .22% - significantly below the allowable tax levy limit of 2.03%

## EXPENDITURES

2014-2015 Approved Budget	\$144,639,038
2015-2016 Proposed Budget	\$146,035,602
Percentage Increase	0.97%
Tax Levy Increase	0.22%

Expenditures include mandated costs attributable to employee retirement systems, health insurance, transportation, utilities and capital expenses as well as contractual salary increases

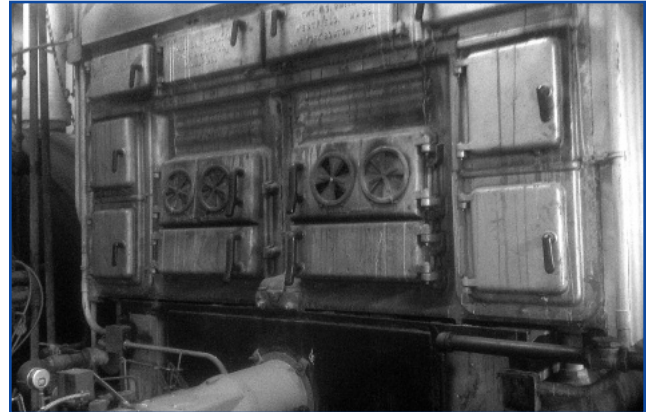
## THREE-PART BUDGET EXPENDITURES



The State of New York requires all school districts make available a proposed budget broken down into three component parts.

The three components of this budget format are Administrative, Instructional Program and Capital

	<u>Approved 2014-2015</u>	<u>Proposed 2015-2016</u>	<u>Change</u>
Administrative	\$ 15,651,466	\$ 15,223,113	\$ (428,353)
Instructional			
Program	111,332,543	109,983,236	(1,349,307)
Capital	17,655,029	20,829,253	3,174,224
<b>Total</b>	<b>\$ 144,639,038</b>	<b>\$ 146,035,602</b>	<b>\$ 1,396,564</b>



## CAPITAL PROJECTS

*Taking Care of the  
District's Physical Assets ...*

The District has established the transfer to capital line for 2015-16.

	<u>Approved 2014-2015</u>	<u>Proposed 2015-2016</u>
Transfer to Capital	\$ 1,898,770	\$ 2,700,000

- Gym bleachers for Mattlin Middle School
- 2 new boilers
- Replace and update electrical systems Districtwide
- Replace POBJFKHS Generator
- Resurface and rubberize track at POBJFKHS
- ADA ramps, sidewalks, parking lot and lighting additions Districtwide
- Furniture replacement project Districtwide
- Gym curtain at POBJFKHS

## IMPORTANT DATES TO REMEMBER

**Tuesday, May 12**

Voter Registration

**Tuesday, May 19**

Vote on Budget and Election of School Board Trustees: 6 a.m. to 9 p.m. at Jamaica Avenue School, Old Bethpage Elementary School and Plainview-Old Bethpage Middle School

# PROPOSITION I: ANNUAL SCHOOL DISTRICT BUDGET

	Approved Budget 2014-2015	Proposed Budget 2015-2016	Dollar Difference	Percent of Budget
<b>General Support</b>				
Board of Education	\$ 141,672	\$ 160,197	\$ 18,525	
Superintendent's Office	439,484	444,024	4,540	
Business Administration/Finance	1,215,379	1,334,339	118,960	
Personnel/Public Info/Legal	1,146,397	1,172,474	26,077	
Operations & Maintenance	10,359,907	10,818,124	458,217	
Insurance/BOCES	1,363,066	1,396,598	33,532	
<b>Total General Support</b>	<b>\$ 14,665,905</b>	<b>\$ 15,325,756</b>	<b>\$ 659,851</b>	<b>10.49%</b>
<b>Instruction</b>				
Curriculum and Supervision	6,047,292	6,205,211	157,919	
Teaching - Regular K-12	47,104,543	47,968,669	864,126	
Special Education	15,366,962	15,538,500	171,538	
Occ. Ed & Summer School	333,878	314,840	(19,038)	
Instructional Media & Libraries	3,710,937	4,114,724	403,787	
Pupil Services	8,714,255	8,833,408	119,153	
<b>Total Instruction</b>	<b>\$ 81,277,867</b>	<b>\$ 82,975,352</b>	<b>\$ 1,697,485</b>	<b>56.82%</b>
<b>Districtwide Support</b>				
Main Transportation Contract *	4,060,850	4,092,493	31,643	
Transportation - Other **	3,820,259	3,933,883	113,624	
Community Services	210,630	201,213	(9,417)	
Employee Benefits	36,015,045	33,551,128	(2,463,917)	
TAN/EPC/BAN Contract	345,798	820,797	474,999	
School Food Service Transfer	20,000	10,000	(10,000)	
Summer Spec Ed Transfer	66,755	148,500	81,745	
Capital Transfer	1,898,770	2,700,000	801,230	
Debt Service - District & Library	2,257,159	2,276,481	19,322	
<b>Total Districtwide</b>	<b>\$ 48,695,266</b>	<b>\$ 47,734,494</b>	<b>\$ (960,772)</b>	<b>32.69%</b>
<b>TOTAL EXPENDITURES</b>	<b>\$ 144,639,038</b>	<b>\$ 146,035,602</b>	<b>\$ 1,396,564</b>	<b>100.00%</b>
<b>Revenue Summary (Estimated)</b>				
State Aid	\$ 15,255,144	\$ 16,349,956	\$ 1,094,812	
Local/Other Revenue	7,744,933	7,775,136	30,203	
Tax Levy	121,638,961	121,910,510	271,549	
<b>TOTAL REVENUE</b>	<b>\$ 144,639,038</b>	<b>\$ 146,035,602</b>	<b>\$ 1,396,564</b>	<b>1.0%</b>

\* Second year of a possible five-year contract, the total cost of which is estimated at \$27,069,413

\*\* Represents a reallocation of budget for private, parochial and special education transportation.



## PROPOSITION II: AUTHORIZATION TO APPROPRIATE AND EXPEND FROM THE CAPITAL RESERVE FUND

In addition to voting on the 2015-16 school district budget, Plainview-Old Bethpage residents are asked to vote on an additional proposition authorizing the expenditure of \$5,000,000 from the capital reserve fund established in May 2014.

**The use of these funds will not impact the current or future tax levy and funds capital improvements not covered by December 2014's Bond Referendum.** The purpose of this capital reserve fund is for window replacements; roof reconstruction including replacing skylights and recoating entire roof at POBJFKHS; reconstruction of parking lots, driveways and sidewalks at POBJFKHS, H.B. Mattlin Middle School, and Plainview-Old Bethpage Middle School; and ancillary or related work required in connection with such projects.



Windows at POBJFKHS

## PROPOSITION III: ESTABLISHMENT OF A CAPITAL RESERVE FUND

In addition to voting on the 2015-16 budget and expending the remaining funds in the capital reserve fund established in 2014, Plainview-Old Bethpage residents are also asked to vote on the establishment of a new capital reserve fund for the district not to exceed \$5,000,000.

A capital reserve fund (CRF) is essentially a savings account set up by the district to finance future building renovations and potential infrastructure needs. It would be funded by unanticipated revenues and unexpended funds gained from efficiencies and **would not affect the proposed budget, and funds capital improvements not covered by December 2014's Bond Referendum.** A CRF is proposed by the Board of Education and requires voter approval, both to create the reserve and to expend its funds.

For this CRF, we are recommending an amount not to exceed \$5 million at a term of 7 years to fund capital improvements to the facilities of the District, including but not limited to, construction, reconstruction and renovation of parking lots, driveways, sidewalks, paving and drywells at all elementary school buildings; exterior lighting at all elementary and secondary school buildings; Districtwide renovation and replacement of boilers, burners, piping, hot water systems and heating and cooling systems; Districtwide installation of air conditioning and related upgrades to electrical power plant, electrical power supply, electrical cabling, subpanels; construction, reconstruction and/or refurbishment of science/research facilities at POBJFKHS; interior door replacements at all elementary and secondary school buildings and ancillary or related work required in connection with such capital improvements.

The funding source consists of unanticipated revenues and unexpended funds gained from efficiencies from the current year's budget. **This will not increase the proposed budget or the tax levy.**

**The District maintains a strong financial position as rated by Standard & Poor's AAA bond rating. Please visit the Business and Finance Section of the District's website for the District's reserve fund plan, including funding levels for all reserve funds.**

The Plainview-Old Bethpage Central School District will be requesting an exemption from the school breakfast program. Please contact us at 434-3050 for any questions or concerns related to this matter.

# DISTRICT ACHIEVEMENTS

## *District Notables*

For Class of 2014:

- 99% of graduates received a Regents Diploma
- 77% graduated with Advanced Designation
- 98% of graduates are pursuing post-secondary education
- 93% of special education students earned Regents diplomas
- 83% of students taking AP exams scored 3 or better
- 12 NYS Academic Excellence Awards
- 1,113 AP exams administered
- 1 National Merit finalist
- 4 National Hispanic Recognition Program Scholars

## *Science and Math*

- 147 Students Grades 9-12 participate in Science, Behavioral & Mathematics Independent Research
- 1 Intel Student Talent Search semifinalist
- 2 Siemens Math and Science semifinalists
- 2 Junior Science Humanities Symposium finalists
- 7 LISEF Round 2 finalists
- 5 Math Fair Round 2 finalists
- Psych-Fair finalists

## *Extracurricular Activities*

- 85 students qualified for the HSDECA International Competition
- Over 50 community senior citizens in attendance at annual Senior Citizen's Tea
- METMunc hosted its annual Model UN Conference with over 200 students from over 10 high schools across the area
- Best Buddies attended its first Masquerade Ball with over 25 general and special education students in attendance
- Three new clubs formed this year: Girls Learn International, Fashion Club and The Coding Club

- Over 200 students were inducted into our World Language Honor Societies this past fall: Spanish, French, Italian and ASL
- 5 students advanced to the Long Island Championship through the Mattlin First Lego Robotics Club
- *Kids on the Block Club* puppet shows highlighting anti-bullying at all elementary schools
- The Business Honor Society hosted POB Challenge

## *Visual Arts*

- Advanced Placement Art, Best in the World
- Cornell Fashion Award: 2nd place
- 2 honorees juried at the Advanced Visions AP Art Exhibit, LIU
- 39 students honored and 1 senior scholarship awarded at the ASA All-County Art Exhibition
- 7 honorees juried at Heckscher Museum: Long Island's Best Exhibition
- 2 honorees juried at the Advanced Placement Go Ape Exhibit
- 6 honorees at the Huntington Art Council High Arts Showcase; 1 BEST IN SHOW
- 3 awards in Embracing our Differences at the Holocaust and Tolerance Center
- Scholar-Artist Winner in Visual Arts
- Scholar-Artist Winner in Media Arts
- 1 ASA Scholarship Award
- 1 ASA Leadership Award
- 1 St. Joseph's Hospital Photography Award

## *Music*

- 550 students participating in NYSSMA Evaluation Festivals
- 135 students selected for participation in NMEA All-County Festivals



- 8 students selected to All Eastern Music
- 4 students selected to All National Music
- Long Island Arts Alliance Scholar Artist Award Winner for Music

## *Arts in Ed*

- 60 programs presented throughout the district by the PTA units

## *Athletics*

- 100% NYSPHSAA Scholar-Athlete Team Award
- 90 teams in 21 sports
- 2 County Championships: Boys' Volleyball and Girls' Gymnastics
- 2 Conference Championships: Boys' Soccer and Boys' Bowling
- 82% of teams made the playoffs
- All-State: 6 (w/o spring)
- All-County: 22 (w/o spring)
- All-Conference/Class/ Division: 60 (w/o spring)

# WHAT'S ON THE BALLOT?

## Proposition I: Annual School District Budget

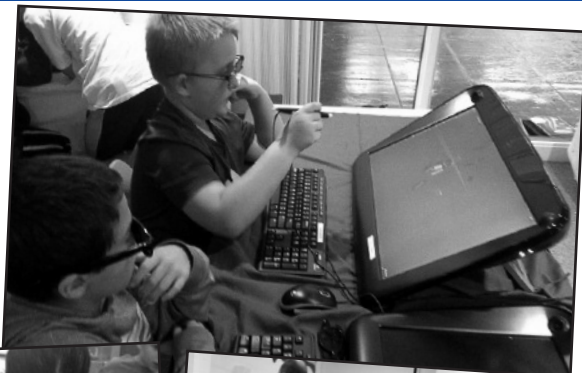
Authorization to spend up to \$146,035,602 to support educational programs in the 2015-16 school year.

## Proposition II: Appropriate and Expend from the Capital Reserve Fund

Authorization to appropriate and expend from the Plainview-Old Bethpage Capital Reserve Fund an amount not to exceed \$5,000,000 with **no increase to the proposed budget.**

## Proposition III: Establishment of a Capital Reserve Fund

Authorization to establish a Plainview-Old Bethpage Capital Reserve Fund in an amount not to exceed \$5,000,000 with **no increase to the proposed budget.**



# BOARD OF EDUCATION CANDIDATES

## ELECTION OF TRUSTEES FOR THE BOARD OF EDUCATION

The two candidates receiving the highest number of votes will be elected as trustees of the Board of Education for the three-year terms commencing July 1, 2015, and expiring on June 30, 2018. You may vote for a separate write-in candidate for each vacancy. You may not write in the same candidate for more than one vacancy.

### VOTE FOR 2:

**ADAM BELLOW • JODI CAMPAGNA • LAUREN SACKSTEIN • MICHAEL TODISCO**

# BUDGET VOTE INFORMATION

**Tuesday, May 19, 2015 • 6 a.m. - 9 p.m.**

Jamaica Avenue School • Old Bethpage Elementary School • POB Middle School

**Voter Eligibility:** In order to vote, you must be a United States citizen, 18 years of age or older, and must have been a district resident for at least 30 days prior to the vote. Eligible voters include those who have voted in federal, state, county or school District elections within the past four years; those who are registered with the Nassau County Board of Elections; and residents who registered during the school District's registration period.

**Absentee Ballot:** To receive an absentee ballot by mail, an application (which can be downloaded from the District's website under Quicklinks) must be received by the District Clerk, Jeanne Tyler, (516) 434-3003 by May 12th, 2015. To personally pick up a ballot, the application must be delivered to the District Clerk's Office by 4 P.M. on May 18th, 2015. All absentee ballots must be received by the District Clerk's office by 5 P.M. on May 19th, the day of the budget vote. Persons designated by the Nassau County Board of Elections as "permanently disabled" will automatically receive an absentee ballot by mail.

**Voter Registration Date:** Tuesday, May 12, 2015, from 4 p.m. to 8 p.m. at Jamaica Avenue School, Old Bethpage Elementary School and Plainview-Old Bethpage Middle School.